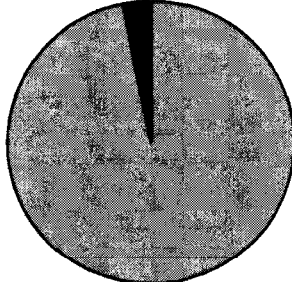


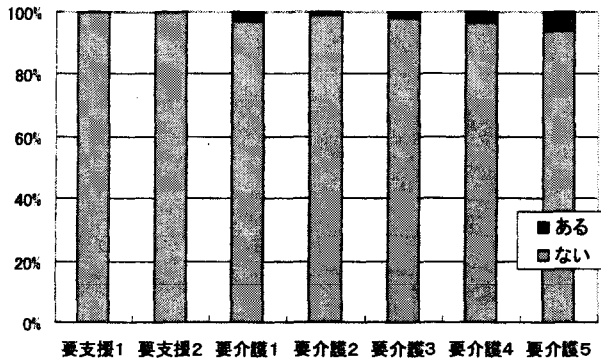
8-1 点滴の管理

ある, 3%



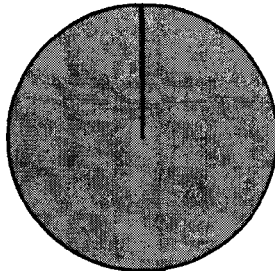
ない, 97%

8-1 点滴の管理



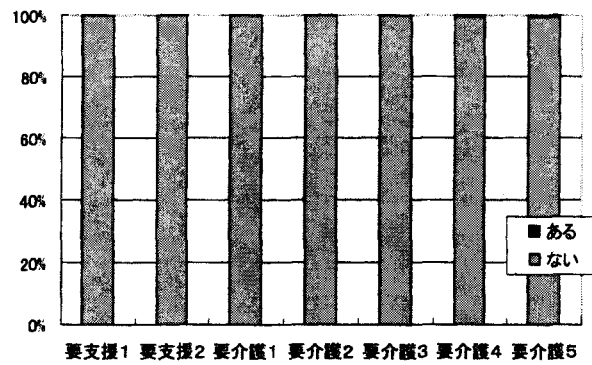
8-2 中心静脈栄養

ある, 0%



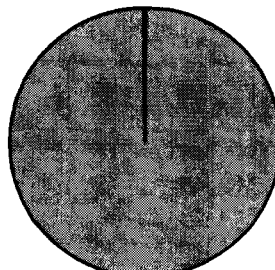
ない, 100%

8-2 中心静脈栄養



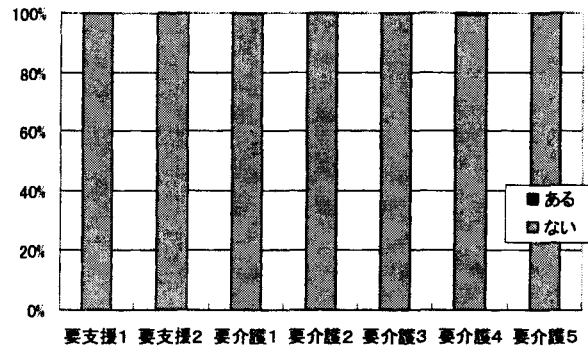
8-3 透析

ある, 0%



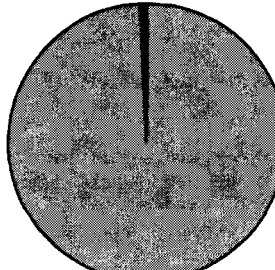
ない, 100%

8-3 透析



8-4 ストーマの処置

ある, 1%



ない, 99%

8-4 ストーマの処置

